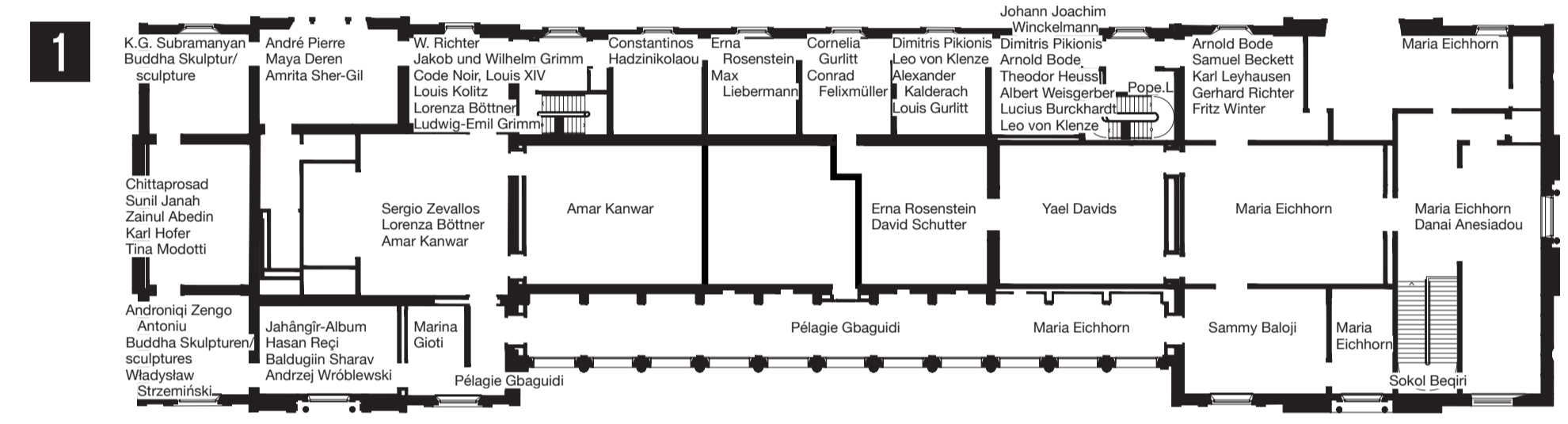
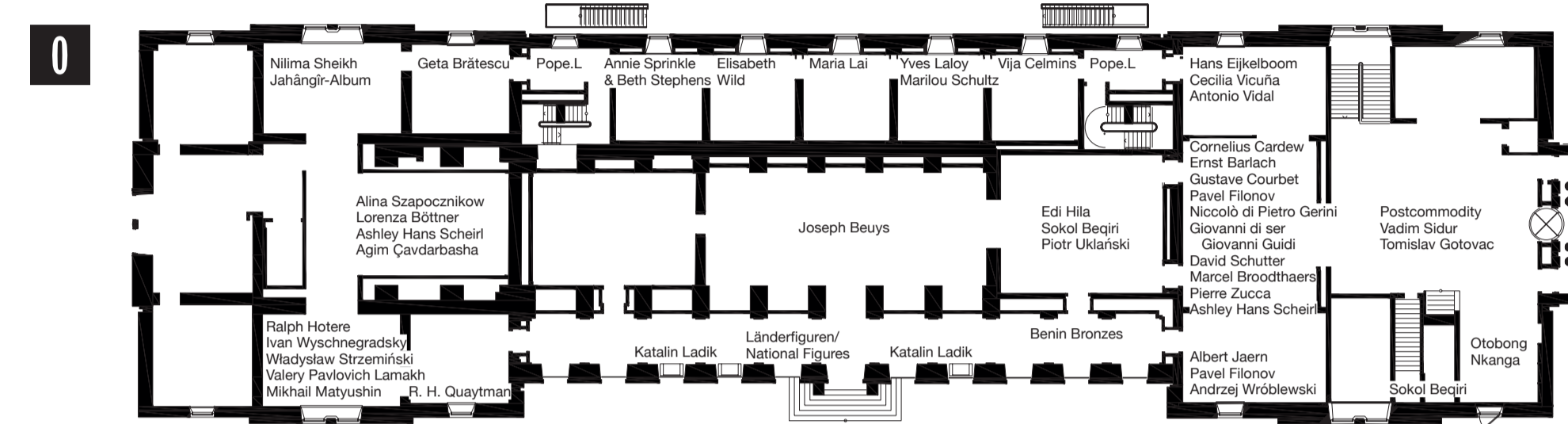
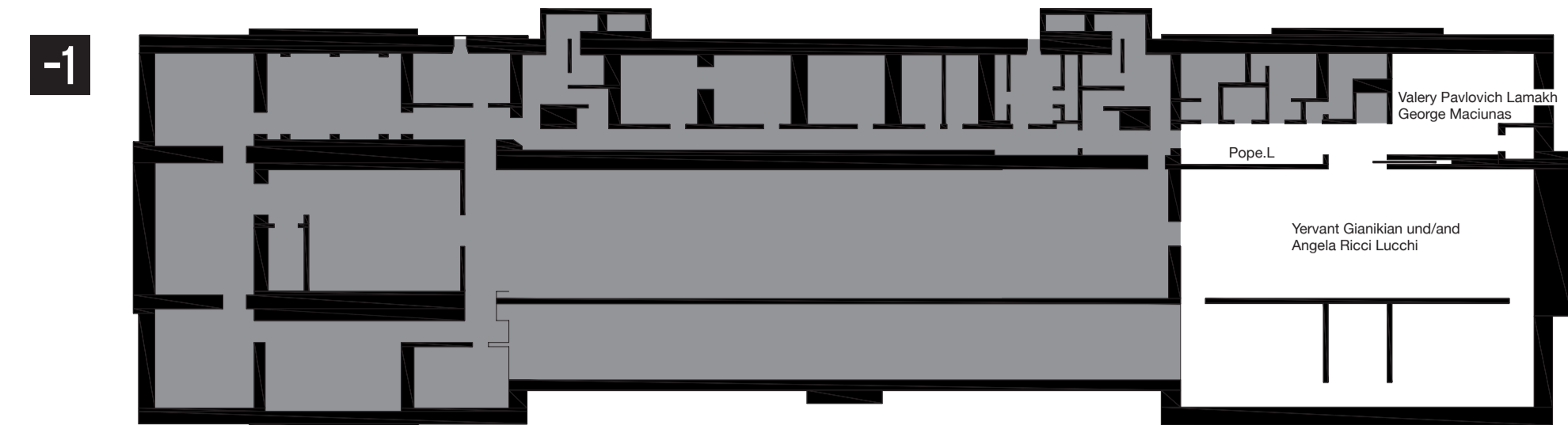
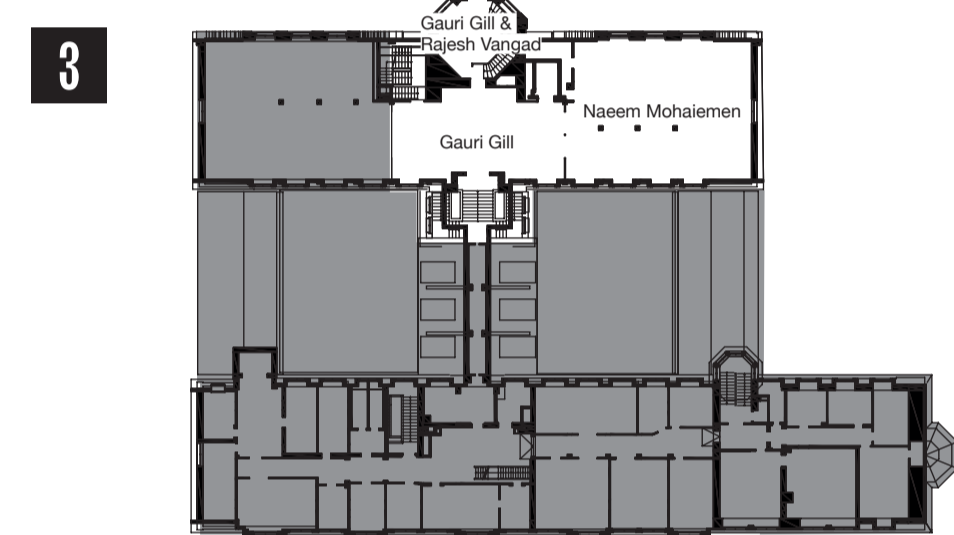
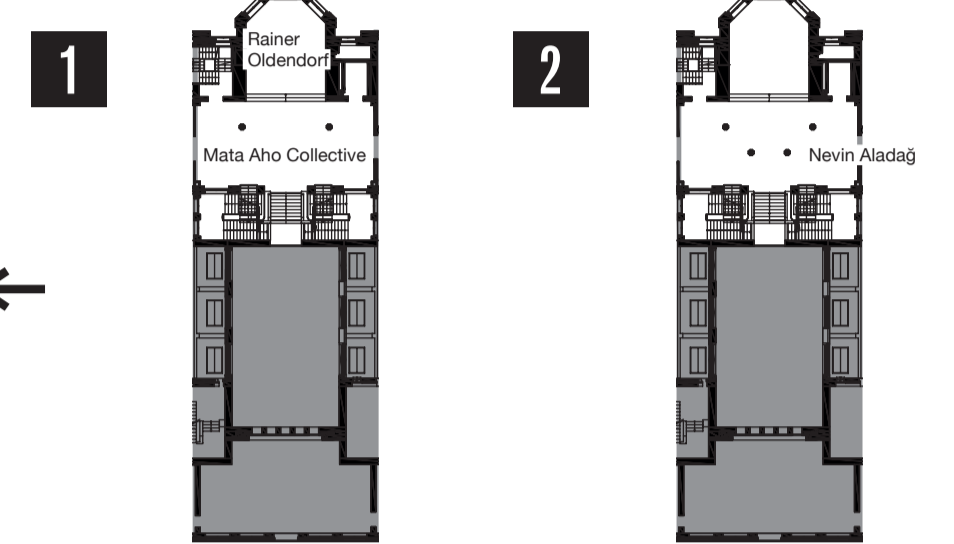
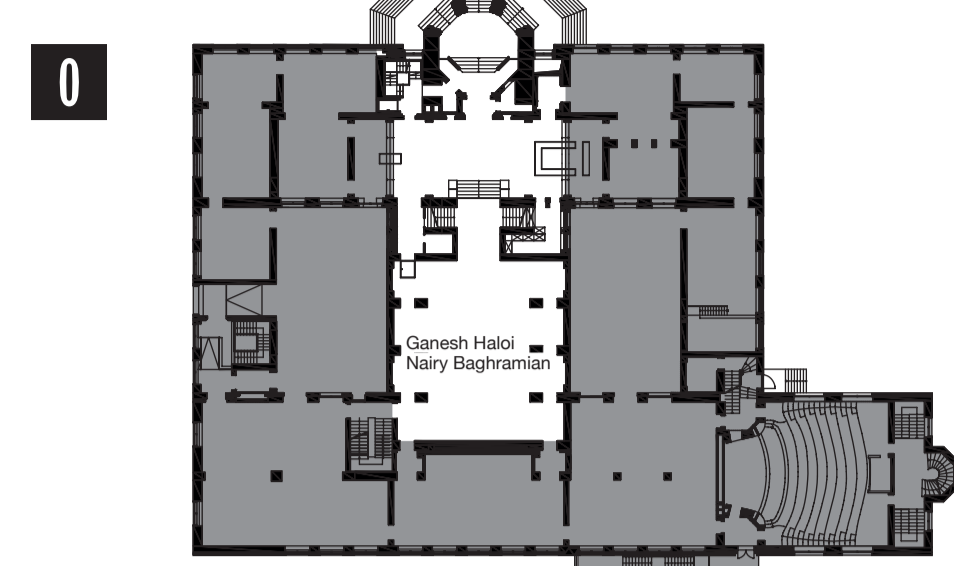


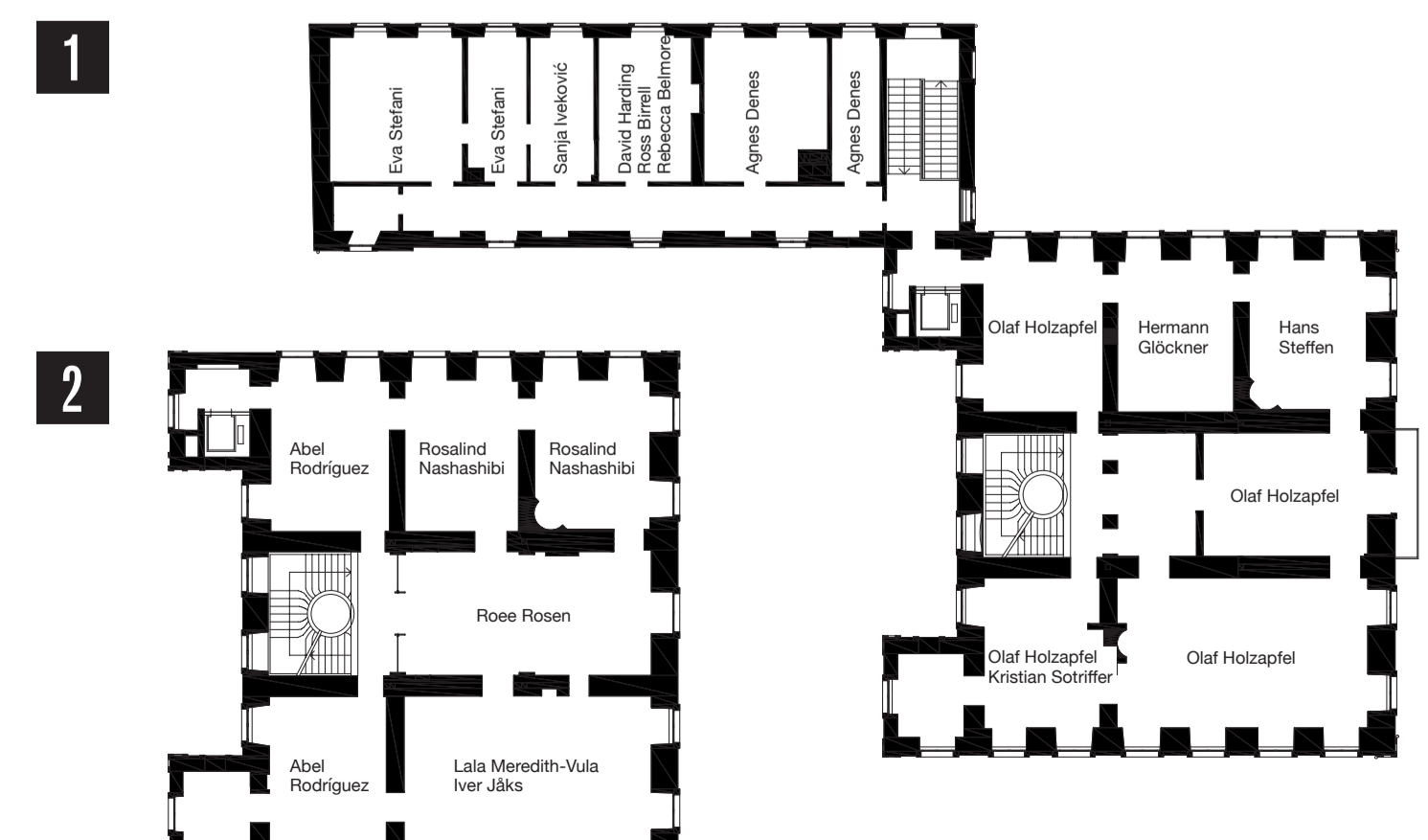
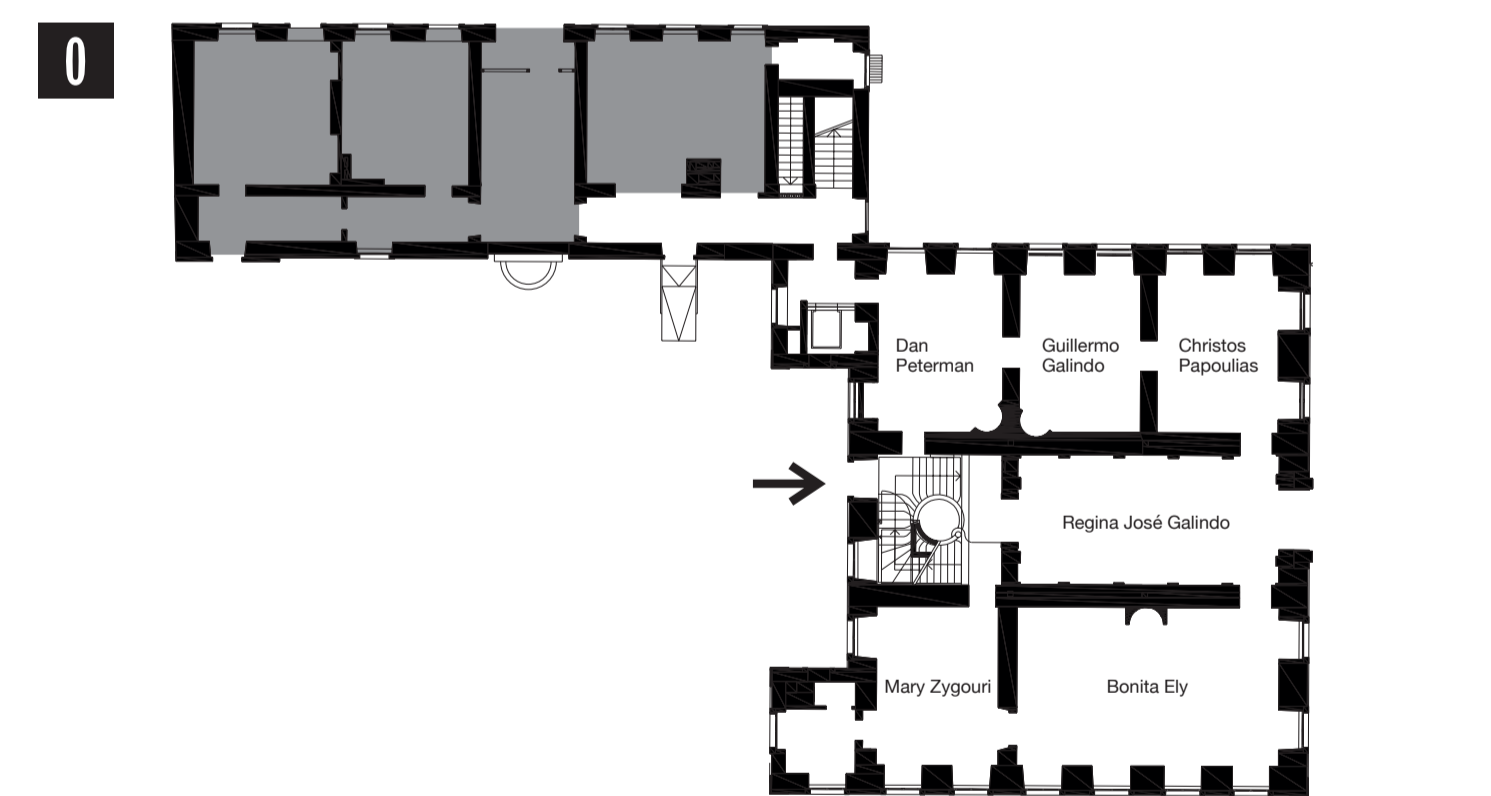
NEUE GALERIE
SCHÖNE AUSSICHT 1



HESSISCHES LANDESMUSEUM
BRÜDER-GRIMM-PLATZ 5



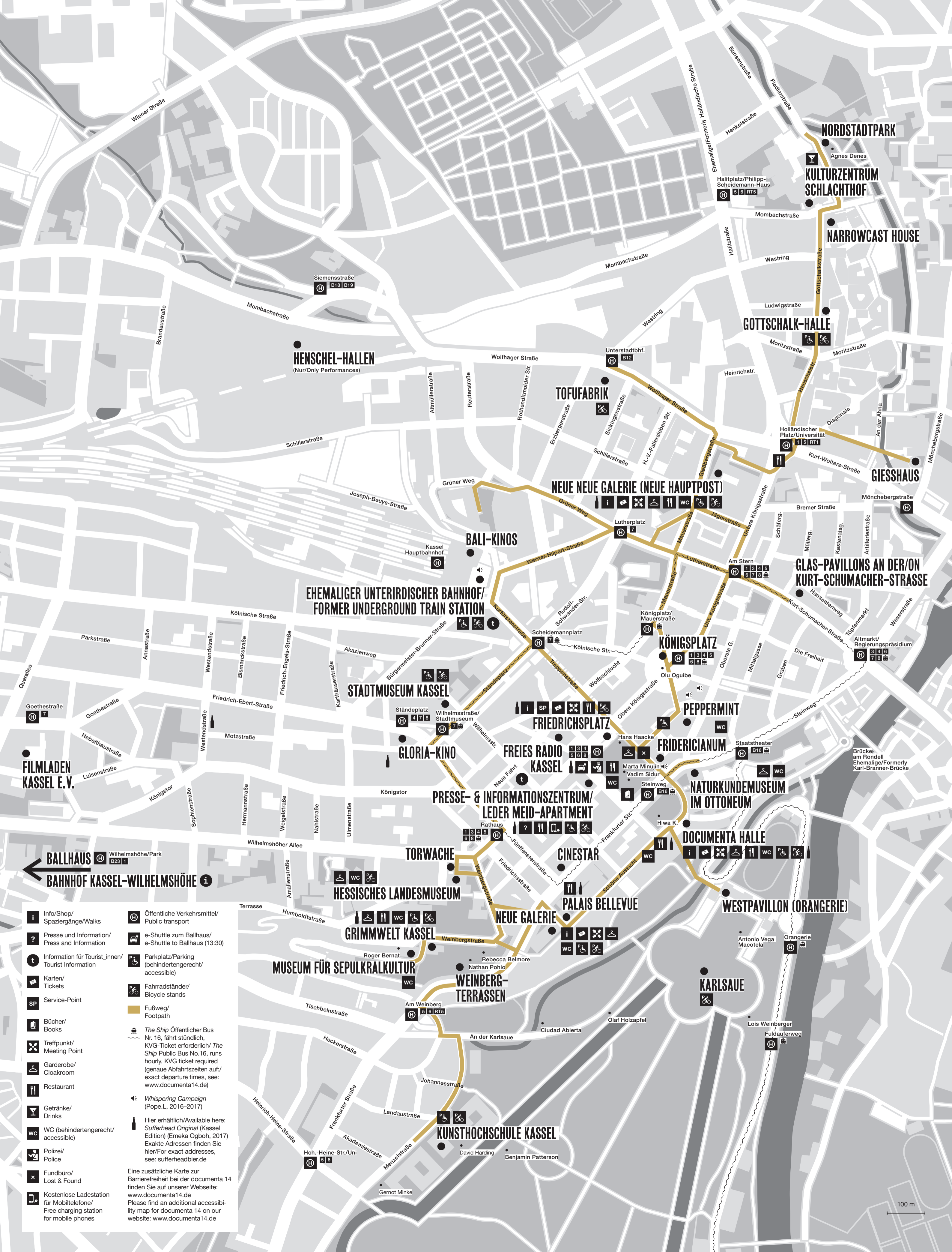
PALAIS BELLEVUE
SCHÖNE AUSSICHT 2



WEITERE AUSSTELLUNGSRORTE/
OTHER VENUES

- BAHNHOF KASSEL-WILHELMSHÖHE**
Willy-Brandt-Platz 1
David Lamelas
- BALI-KINOS**
KulturBahnhof Kassel
Rainer-Dienichs-Platz 1
Daily/Daily: Manthia Diawara, Jonas Mekas, David Perlov
Sonderveranstaltungen/Special Screenings:
TV Politics (Alberto Gai, Isuma Productions, Sarah Maldoror, Alanis Obomsawin, Nagisa Oshima, Mohamed Soueïf)
- BALLHAUS**
Schlosspark 5
Narimane Mari
- CINESTAR**
Karlplatz 8
Douglas Gordon
- EHEMALIGER UNTERIRDISCHER BAHNHOF/FORMER UNDERGROUND TRAIN STATION**
Rainer-Dienichs-Platz 1
Michel Auder, Nikhil Chopra, Ohjya, Georgia Sagri, Zafos Xagoraris
- FREIES RADIO KASSEL**
Opernstraße 2
Öffnungszeiten/Opening hours:
mittwochs 15-16 Uhr/
Wochentags 3-4pm
Live In-Studio Blind Whispering
Pope.L
- FRIEDRICHSPLATZ**
Banu Cennetoglu, Hans Haacke, Hiwa K, Pope.L, Daniel Knoor, Marta Minujin, Ben Russell, Georgia Sagri, Vadim Sidur
- GIESSHAUS**
UNIVERSITÄT KASSEL/UNIVERSITY OF KASSEL
Mönchebergstraße 19
Angela Maitlopoulos
- GLORIA-KINO**
Friedrich-Ebert-Straße 3
Daily/Daily: Wang Bing
Sonderveranstaltungen/Special screenings:
Dimitris Athridis, Maria Kourkoutsu und'and Niki Giannari, Véréna Paravel und'and Lucien Castaing-Taylor, Anne Charlotte Robertson, Annie Sprinkle und'and Beth Stephens
- GOTTSCHALK-HALLE/UNIVERSITÄT KASSEL/UNIVERSITY OF KASSEL**
Gottschalkstraße 20
Bibi Bidjocka, Pedro G. Romero, Isaac Galván und'and Niño de Eliche, Brauchra Khalil, Angelo Pissas
- HENSCHEL-HALLEN**
Wolhager Straße 109
Öffnungszeiten/Opening hours:
dienstags 11-14 Uhr/
Tuesdays 11 am-2 pm
Ibrahim Mahama
- KARLSAUE**
Ciudad Abierta, Olaf Holzappel, Antonio Vega Macotela, Benjamin Patterson, Lois Weinberger
- KÖNIGSPLATZ**
Olu Ogube
- KULTURZENTRUM SCHLACHTHOF**
Mombachstraße 10-12
Öffnungszeiten/Opening hours:
täglich 14-23 Uhr/daily 2-11 pm
Bei Regen geschlossen/closed in case of rain
Maria Magdalena Campos-Pons und'and Neil Leonard
- LEDER MEID-APARTMENT**
Friedrichsplatz 4
Apostolos Georgiou
- NARROWCAST HOUSE**
Gottschalkstraße 36
Öffnungszeiten/Opening hours:
Mo-Fr 15-20 Uhr, Sa-So 10-20 Uhr/
Mon-Fri 3-8 pm, Sat-Sun 10 am-8 pm
- NORDSTADTPARK**
Ecke Fiedlerstraße und'and Haarmannweg
Agnes Denes
- PEPPERMINT**
Untere Karlstraße 8
Öffnungszeiten/Opening hours:
Mo-Fr 10-15 Uhr/ Mon-Fri 10 am-3 pm
Lucius und'and Annemarie Burckhardt
- PRESSE- UND INFORMATIONZENTRUM/ PRESS AND INFORMATION CENTER**
Friedrichsplatz 4
Beatriz González, Dmitri Prigov
- TOFUFABRIK**
Wolhager Straße 39a
Véronica Paravel und'and Lucien Castaing-Taylor
- TORWACHE**
Brüder-Grimm-Platz 6
Oskar Hansen, Edi Hila, Ibrahim Mahama, Annie Vigier & Franck Apertet (les gens d'Uterpan), Lois Weinberger
- WEINBERG-TERRASSEN**
Rebecca Belmore, Nathan Pohio
- WESTPAVILLON (ORANGERIE)**
An der Karlsaue 20
Romaina Karmakar
- Öffnungszeiten (sofern nicht anders angegeben):** täglich 10-20 Uhr/
Opening hours (unless otherwise stated): daily 10 am-8 pm

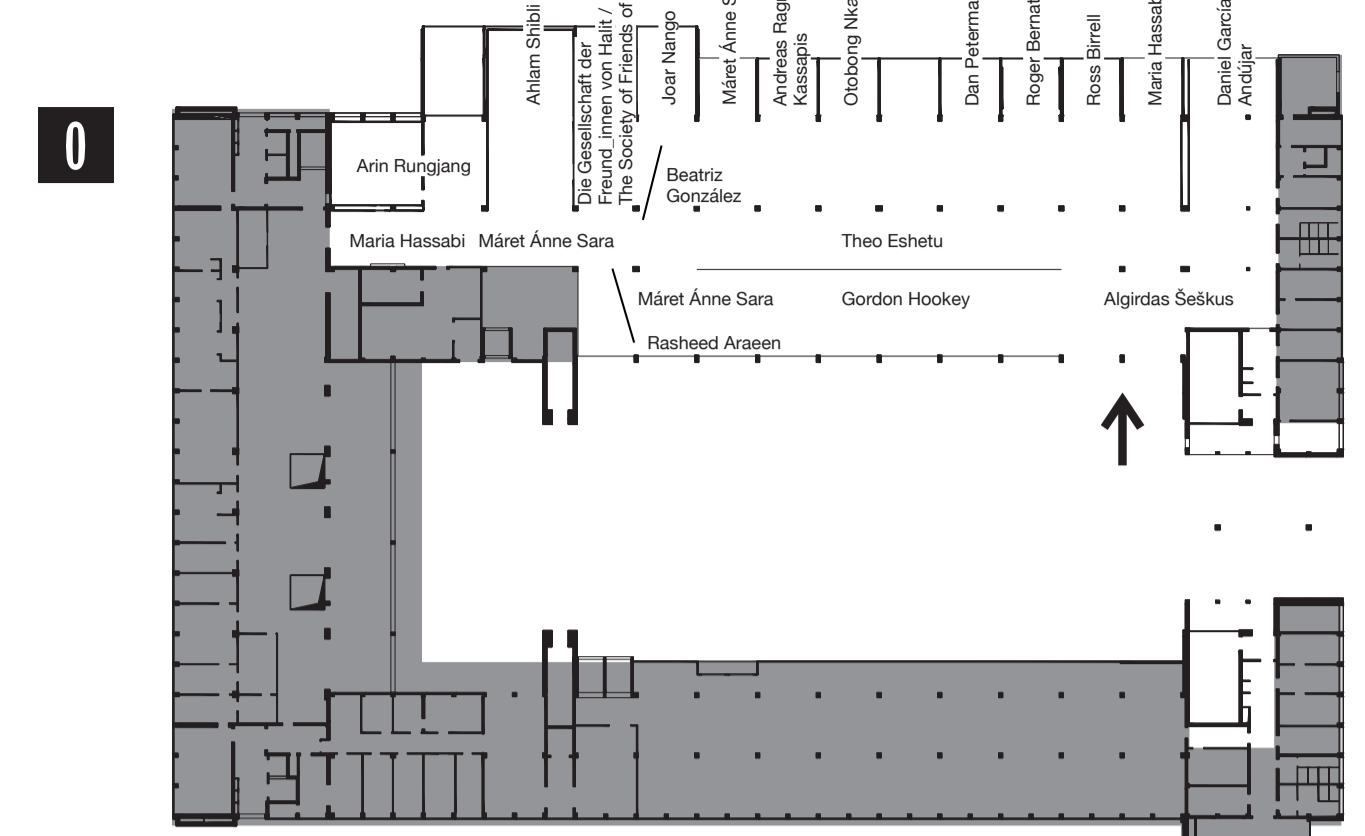
KASSEL
INFO-KARTE/MAP
DOCUMENTA 14: 10. JUNI - 17. SEPTEMBER 2017



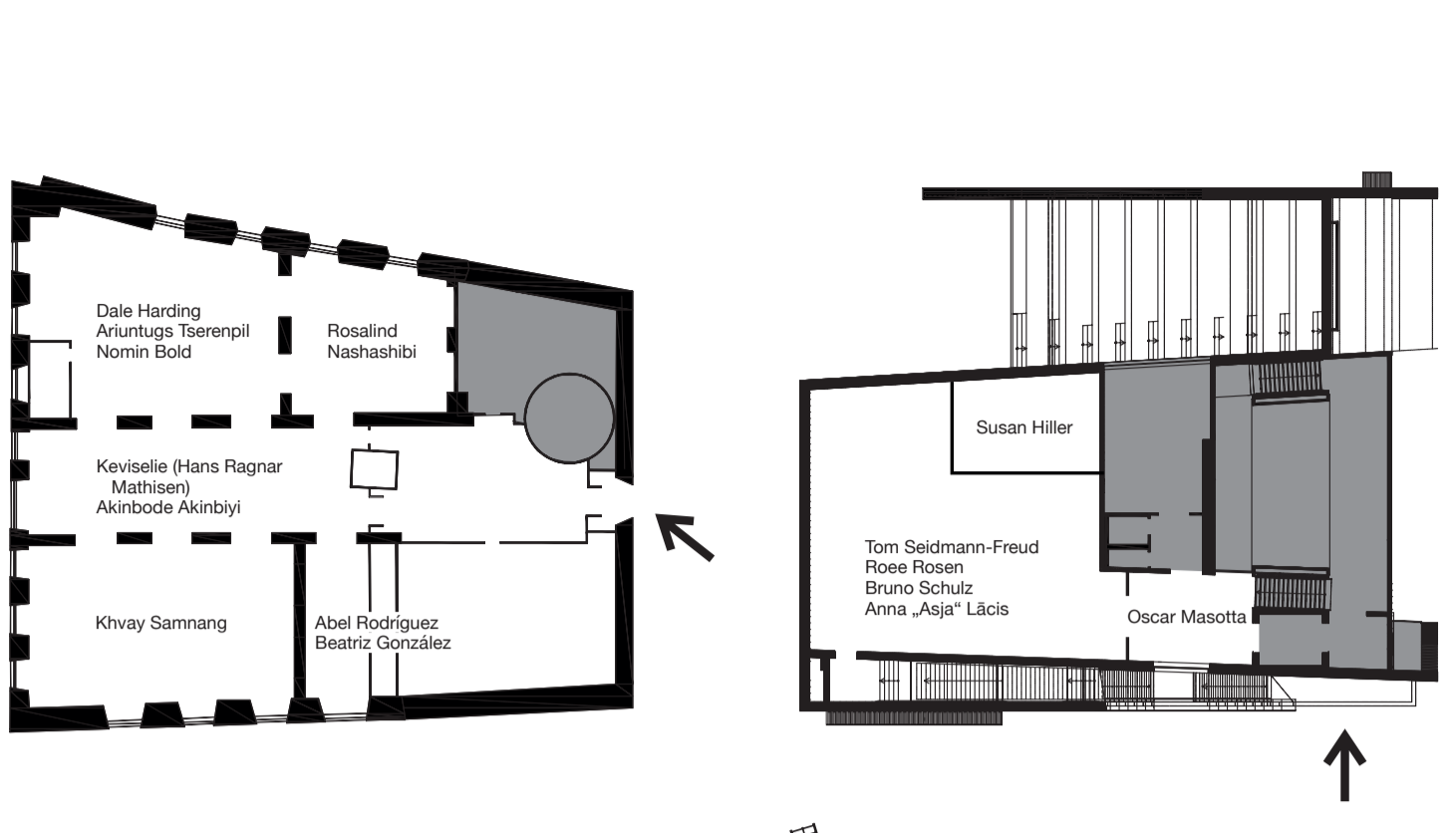
- i** Info/Shop/ Spaziergänge/Walks
- ?** Presse und Information/ Press and Information
- t** Information for Tourist_innen/ Tourist Information
- SP** Service-Point
- B** Bücher/ Books
- T** Treffpunkt/ Meeting Point
- G** Garderobe/ Coatroom
- R** Restaurant
- Y** Getränke/ Drinks
- WC** WC (behindertengerecht/ accessible)
- P** Polizei/ Police
- X** Fundbüro/ Lost & Found
- L** Kostenlose Ladestation für Mobiltelefone/ Free charging station for mobile phones
- Ö** Öffentliche Verkehrsmittel/ Public transport
- S** e-Shuttle zum Ballhaus/ e-Shuttle to Ballhaus (13:30)
- P** Parkplatz/Parking (behindertengerecht/ accessible)
- F** Fahrradständer/ Bicycle stands
- F** Fußweg/ Footpath
- 16** The Ship Öffentlicher Bus Nr. 16, fährt stündlich, KVG-Ticket erforderlich/ The Ship Public Bus No.16, runs hourly, KVG ticket required (genaue Abfahrtszeiten auf/ exact departure times, see: www.documenta14.de)
- 4** Whispering Campaign (Pope.L, 2016-2017)
- Hier erhältlich/Available here:** WC (behindertengerecht/ accessible) (Kassel Edition) (Emeka Ogboh, 2017) Exakte Adressen finden Sie hier/For exact addresses, see: sufferheadier.de
- Eine zusätzliche Karte zur Barrierefreiheit bei der documenta 14 finden Sie auf unserer Webseite:** www.documenta14.de
Please find an additional accessibility map for documenta 14 on our website: www.documenta14.de

Design: Mevis & Van Duuren, with Virginia Gauthier, Daria Rossini and Marius Schwarz

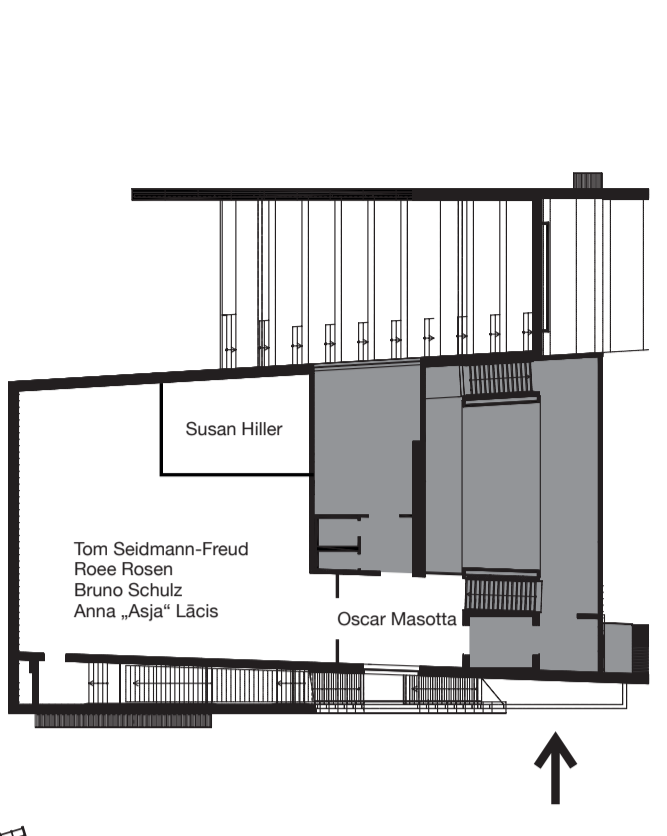
NEUE GALERIE (NEUE HAUPTPOST)
GIESSBERGSTRASSE 22



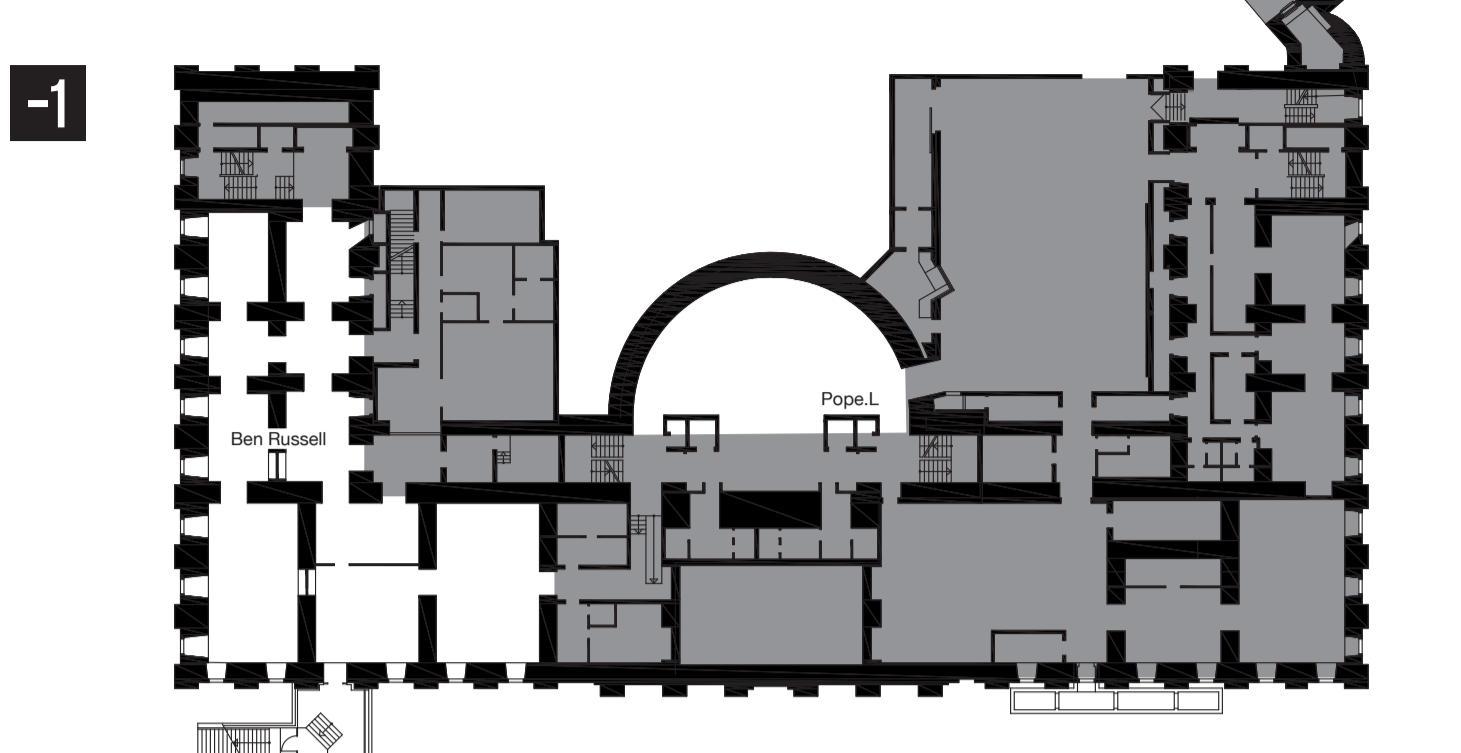
NATURKUNDE MUSEUM IM OTTONEUM
STEINWEG 2



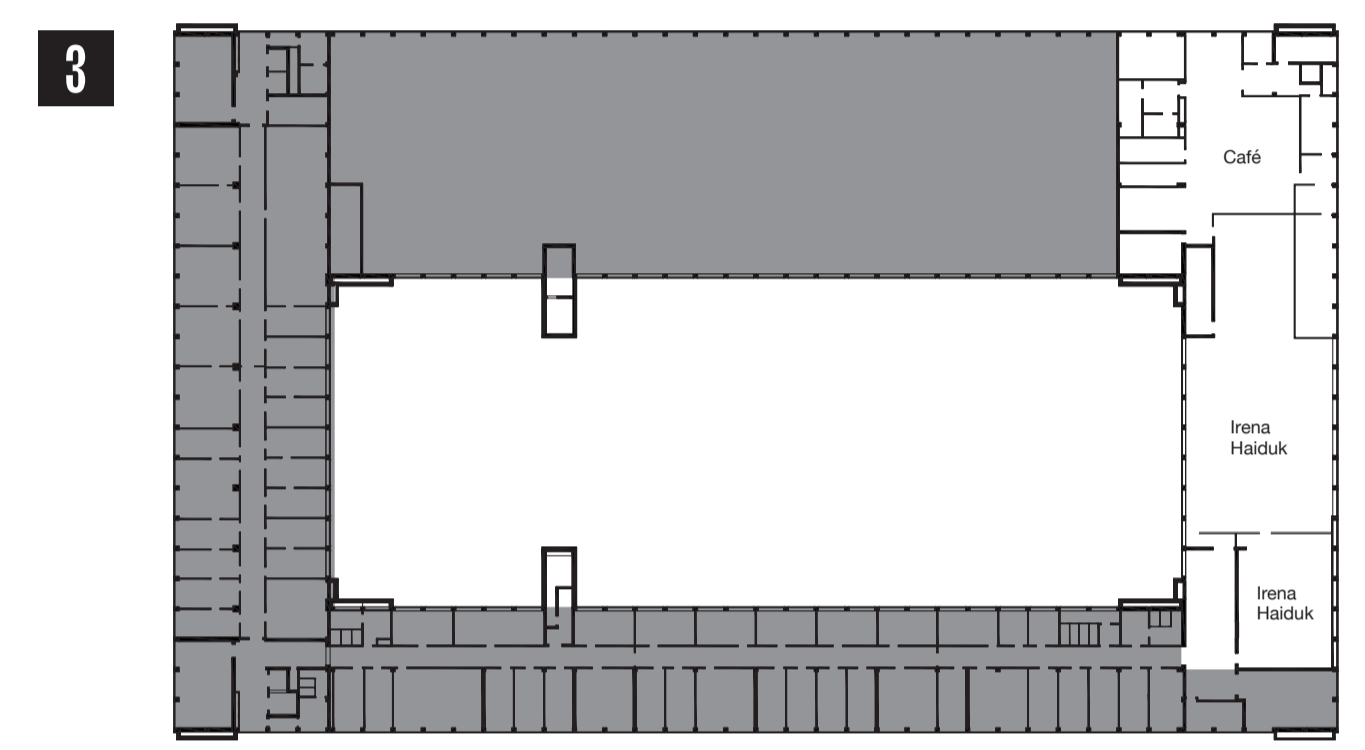
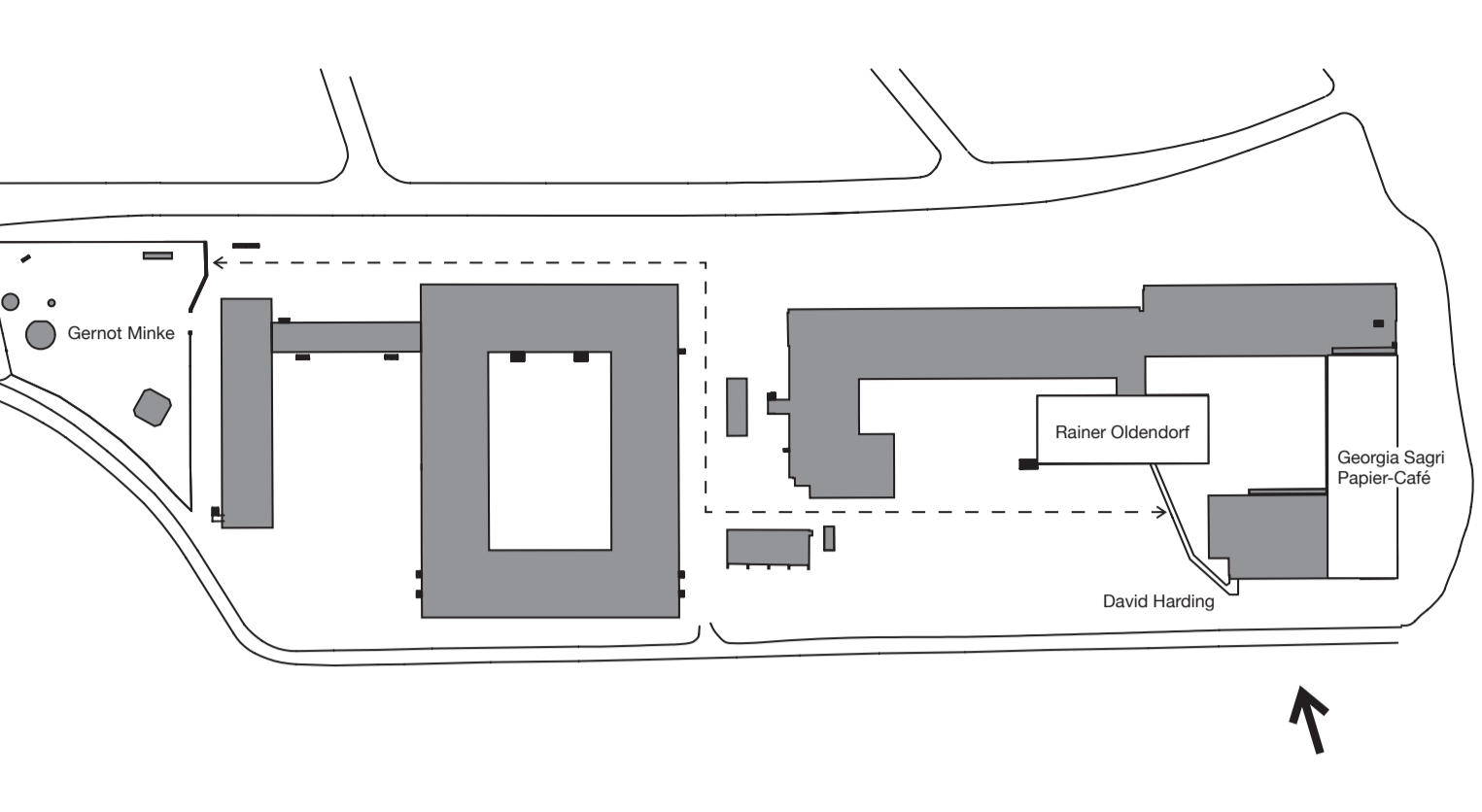
GRIMMWELT KASSEL
WEINBERGSTRASSE 21



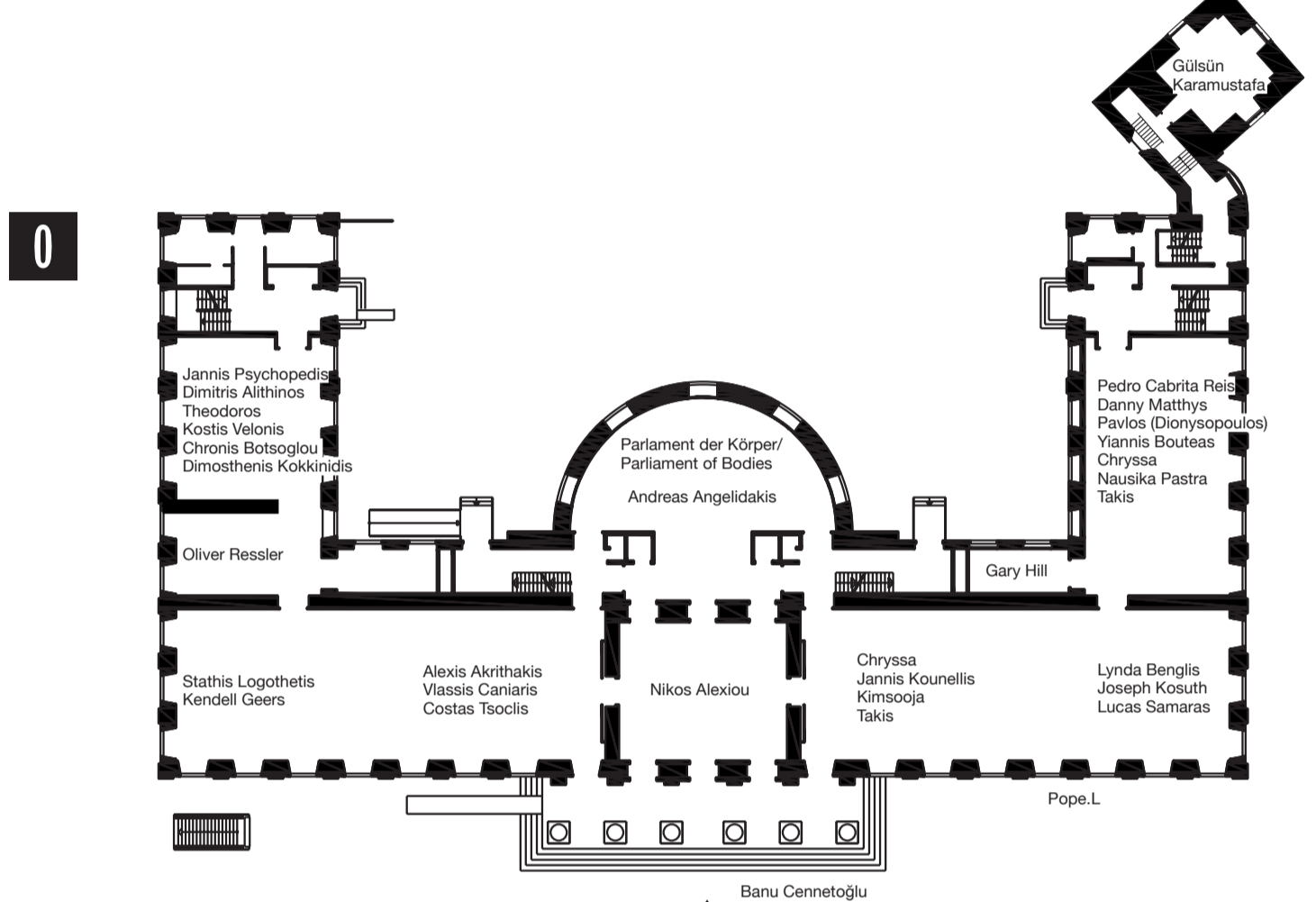
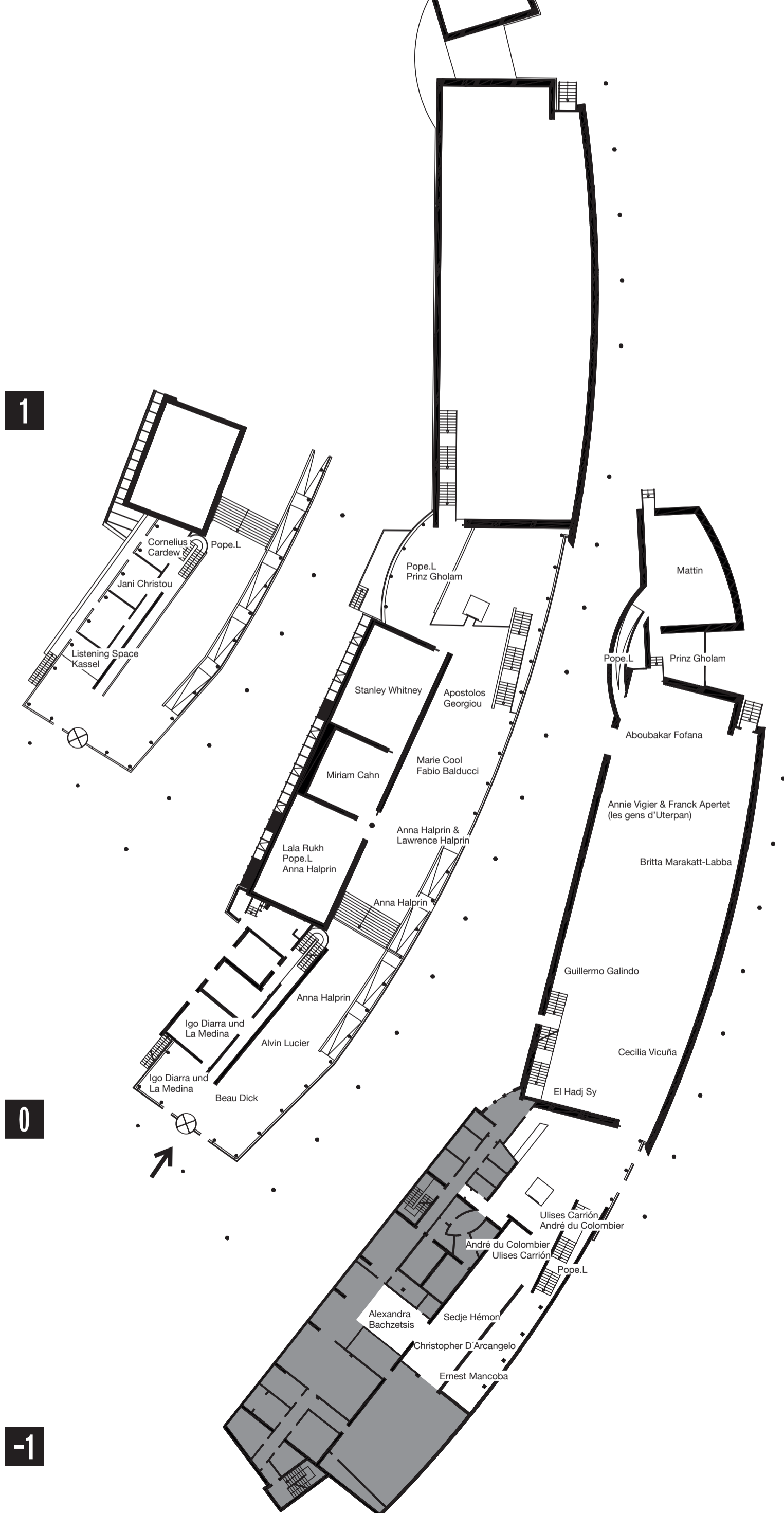
**FRIDERICIANUM (ARBEITEN DER EMST SAMMLUNG/
WORKS FROM THE EMST COLLECTION)**
FRIEDRICHSPLATZ 18



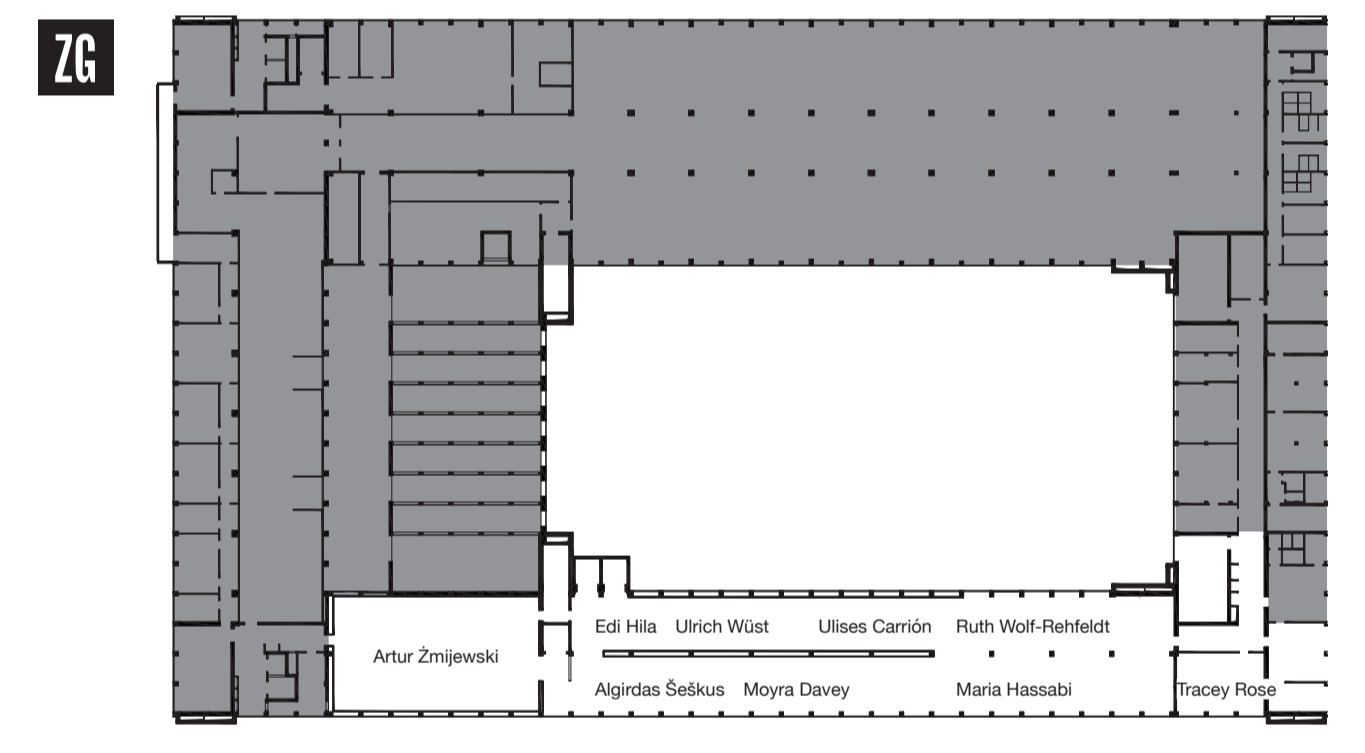
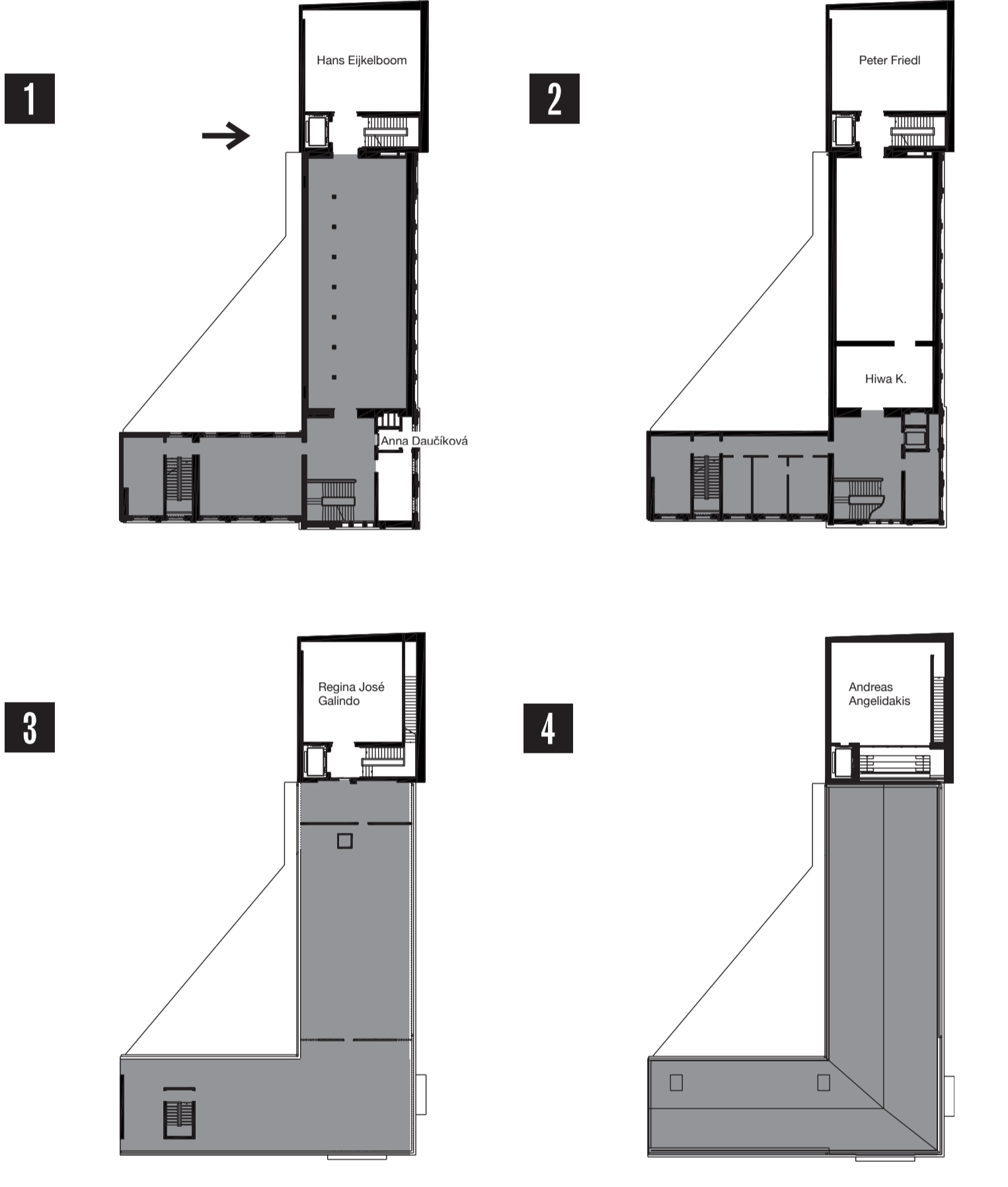
KUNSTHOCHSCHULE KASSEL
MENZELSTRASSE 13



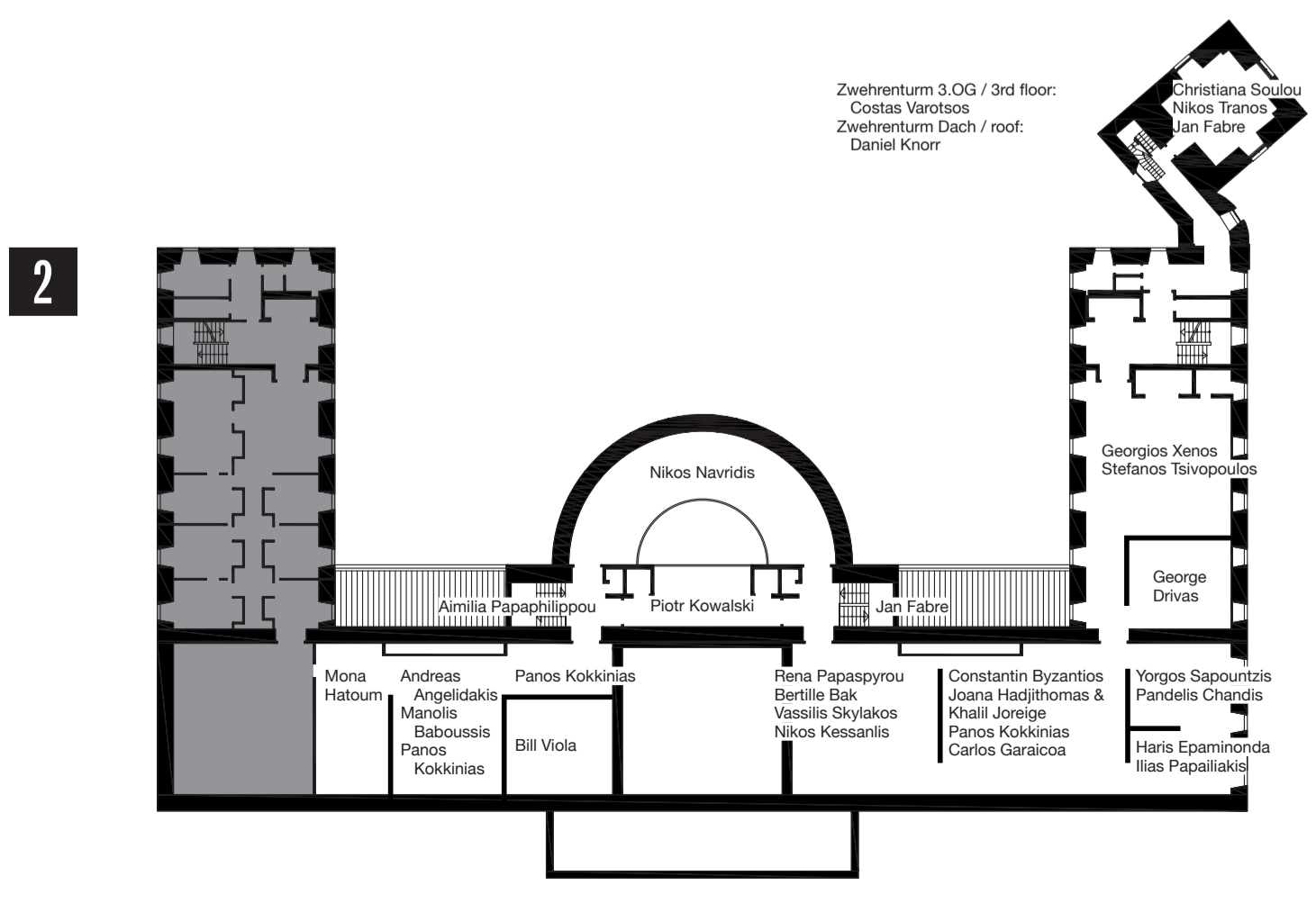
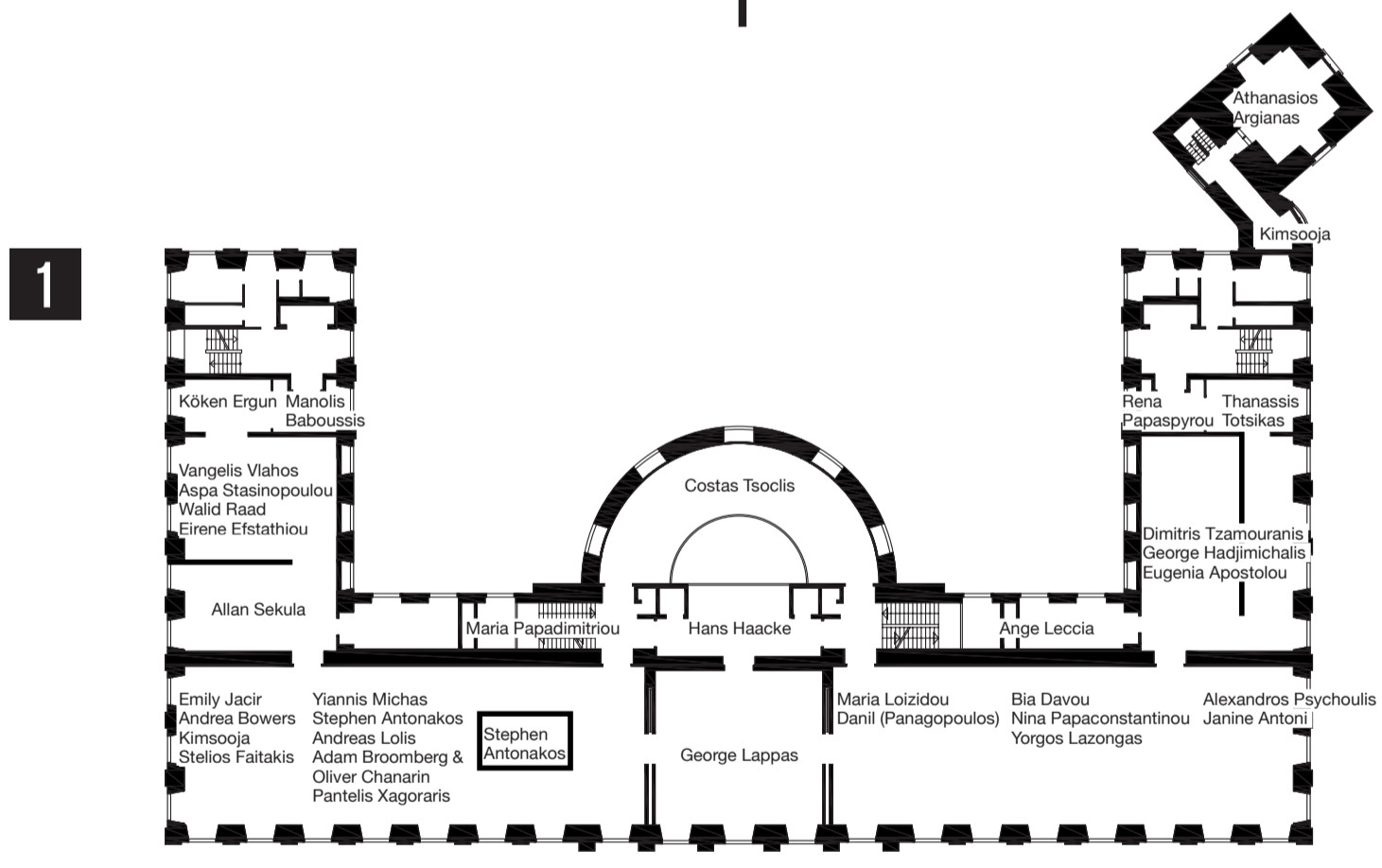
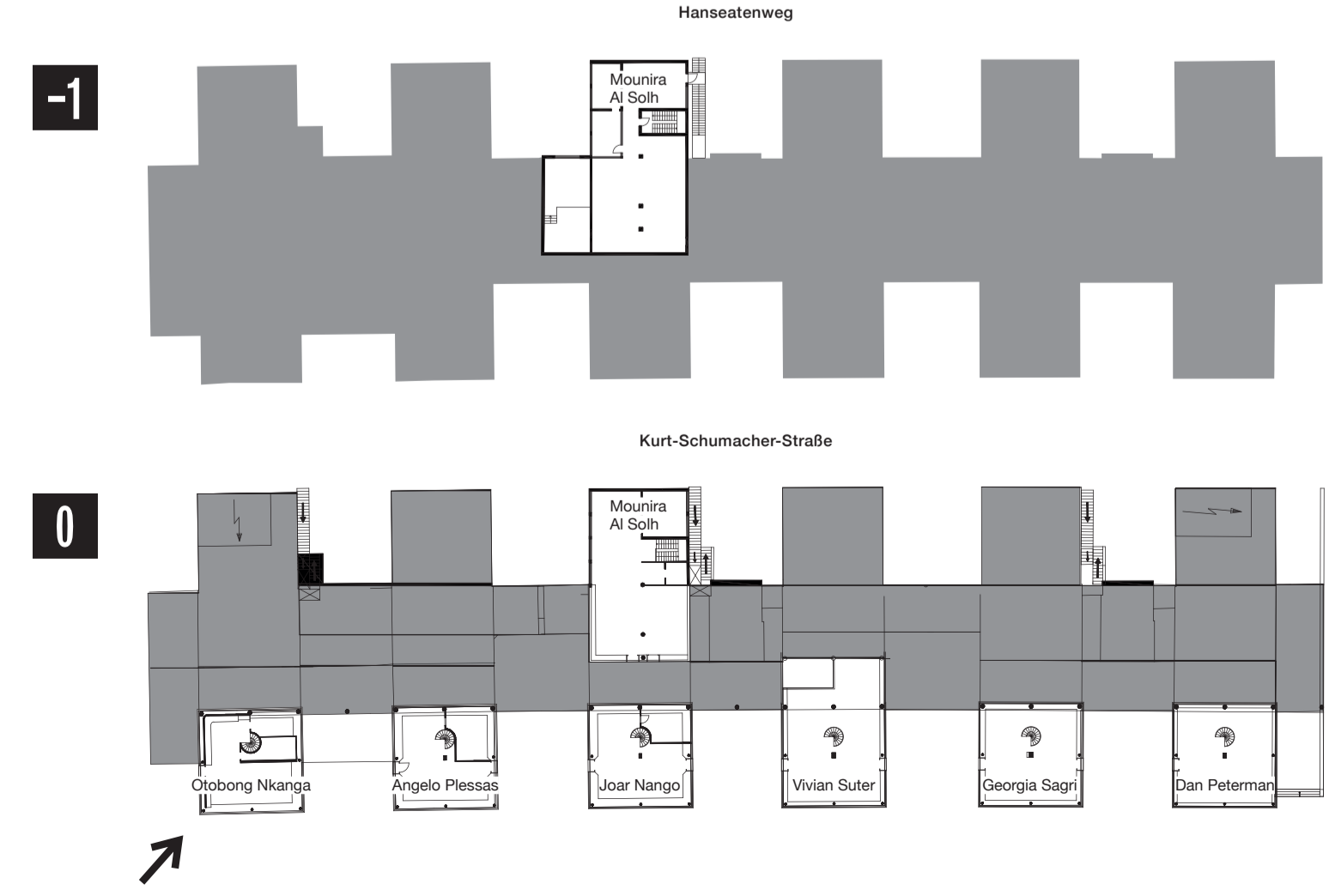
DOCUMENTA HALLE
DU-RY-STRASSE 1



STADTMUSEUM KASSEL
STÄNDEPLATZ 16



GLAS-PAVILLONS AN DER/ON KURT-SCHUMACHER-STRASSE
KURT-SCHUMACHER-STRASSE 23



MUSEUM FÜR SEPULKRAKULTUR
WEINBERGSTRASSE 25

